

A silhouette of a person climbing a rock face is positioned in the upper right corner of the slide. The climber is facing left, with their right arm extended upwards and their left hand on the rock. A rope is visible running vertically along the rock face. The background is a warm, golden sunset sky with soft, horizontal cloud bands. The bottom of the slide shows a dark silhouette of a mountain range.

Resuscitation Academy

History & Overview

Ann Doll, RA Foundation

Summary of Out-of-Hospital Survival



Global Summary

All Arrests – 6%

VF Arrests – 13%

North America

All Arrests – 6%

VF Arrests – 16%

No Improvement in Survival Over Time

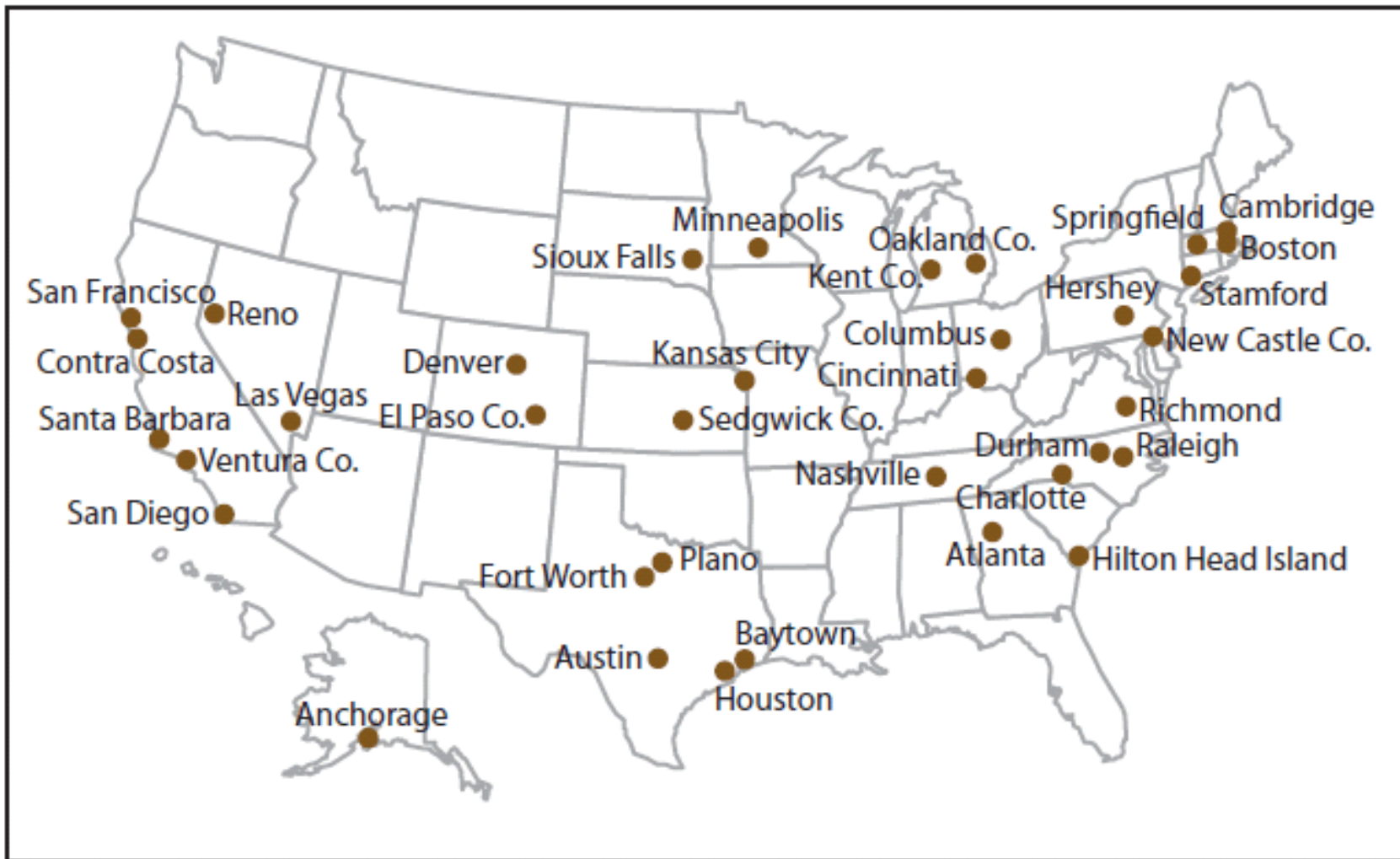
There is hope





CARES

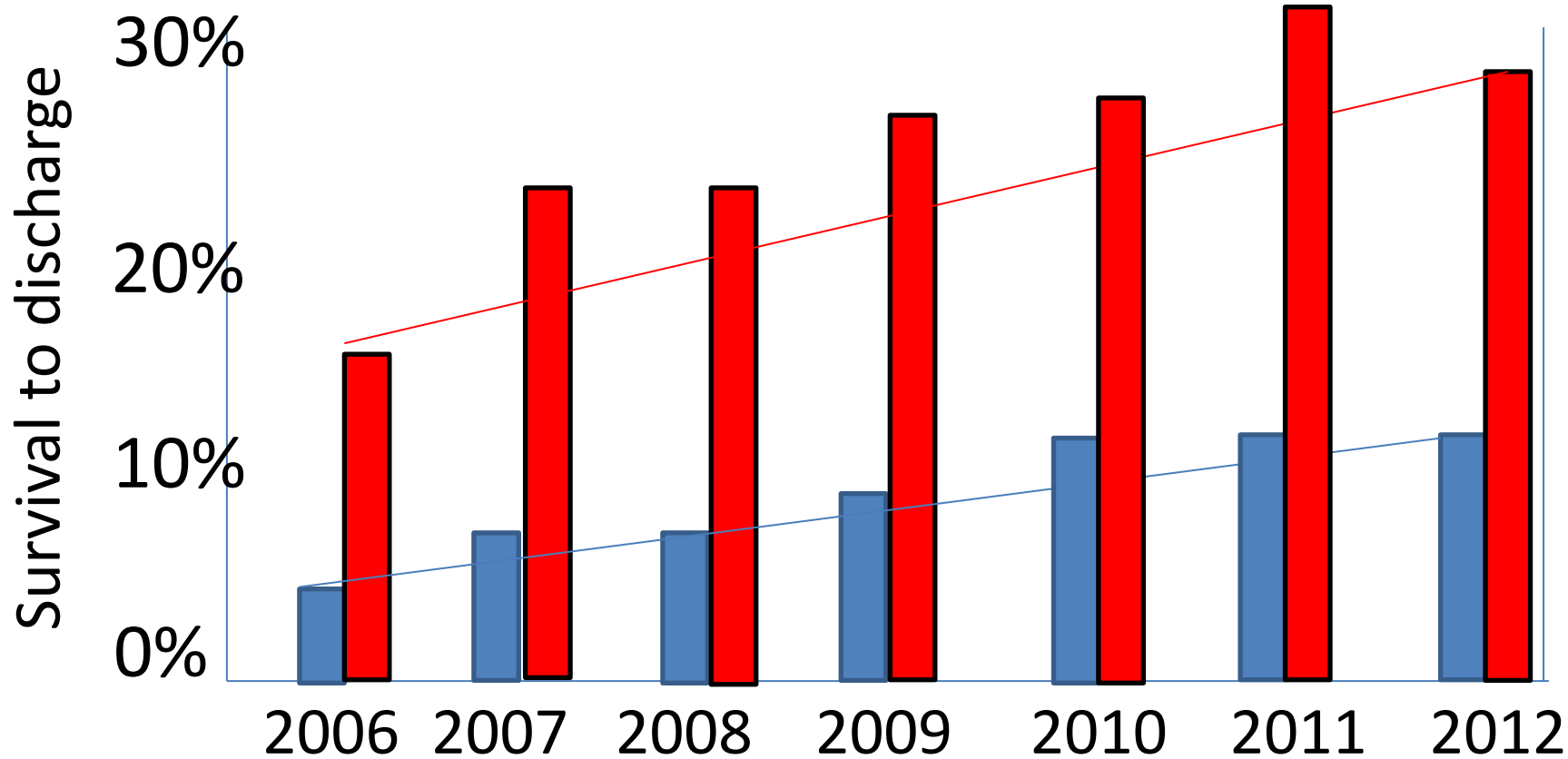
Cardiac Arrest Registry
to Enhance Survival

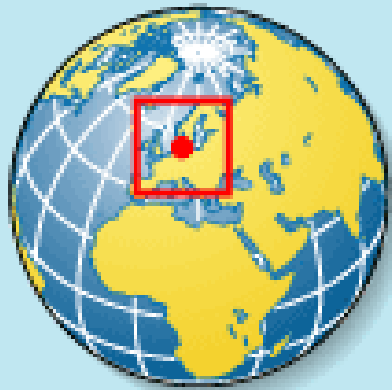




CARES

Cardiac Arrest Registry
to Enhance Survival





North
Sea

Kattegat

COPENHAGEN

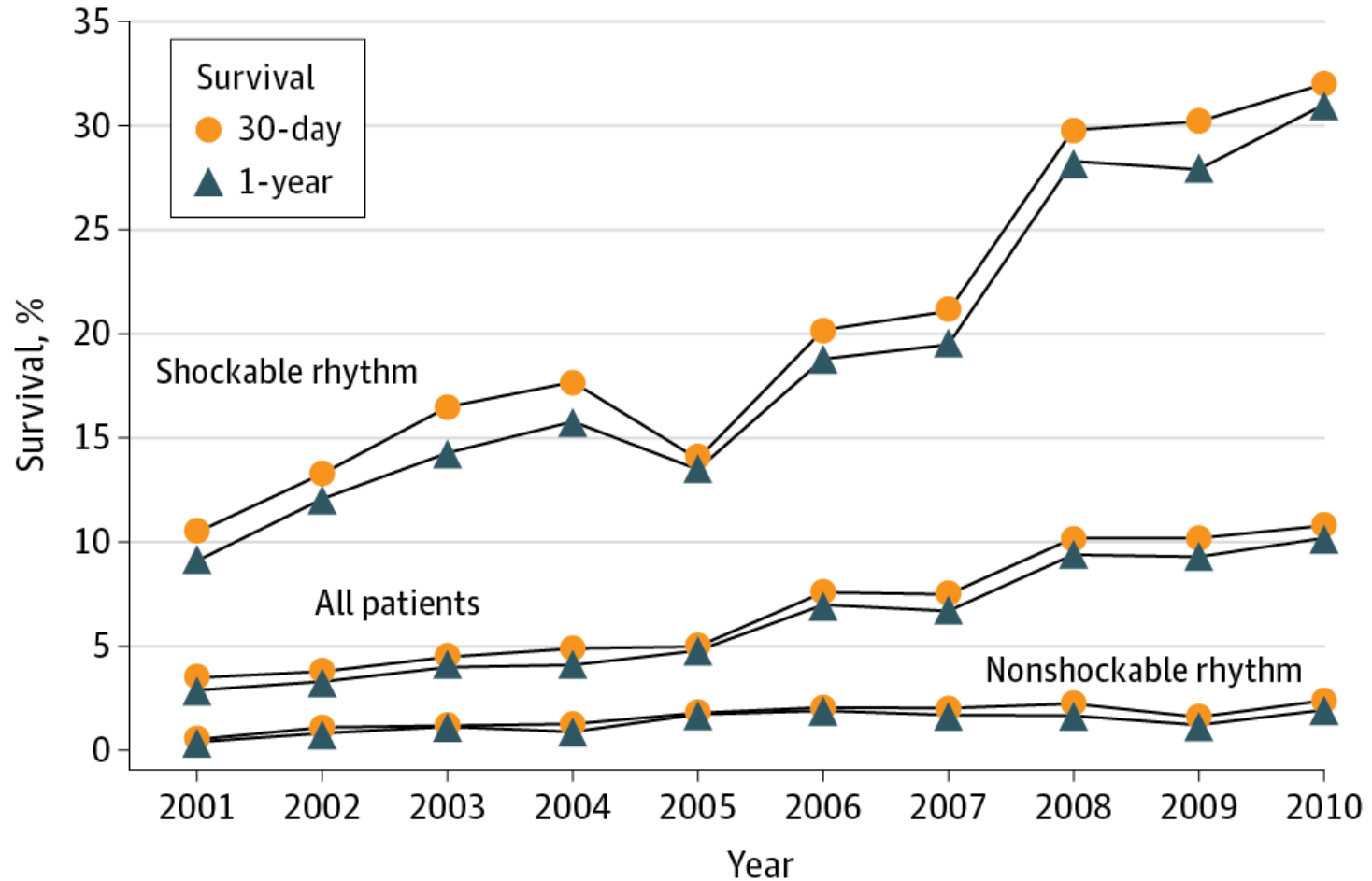
SWEDEN

Baltic
Sea

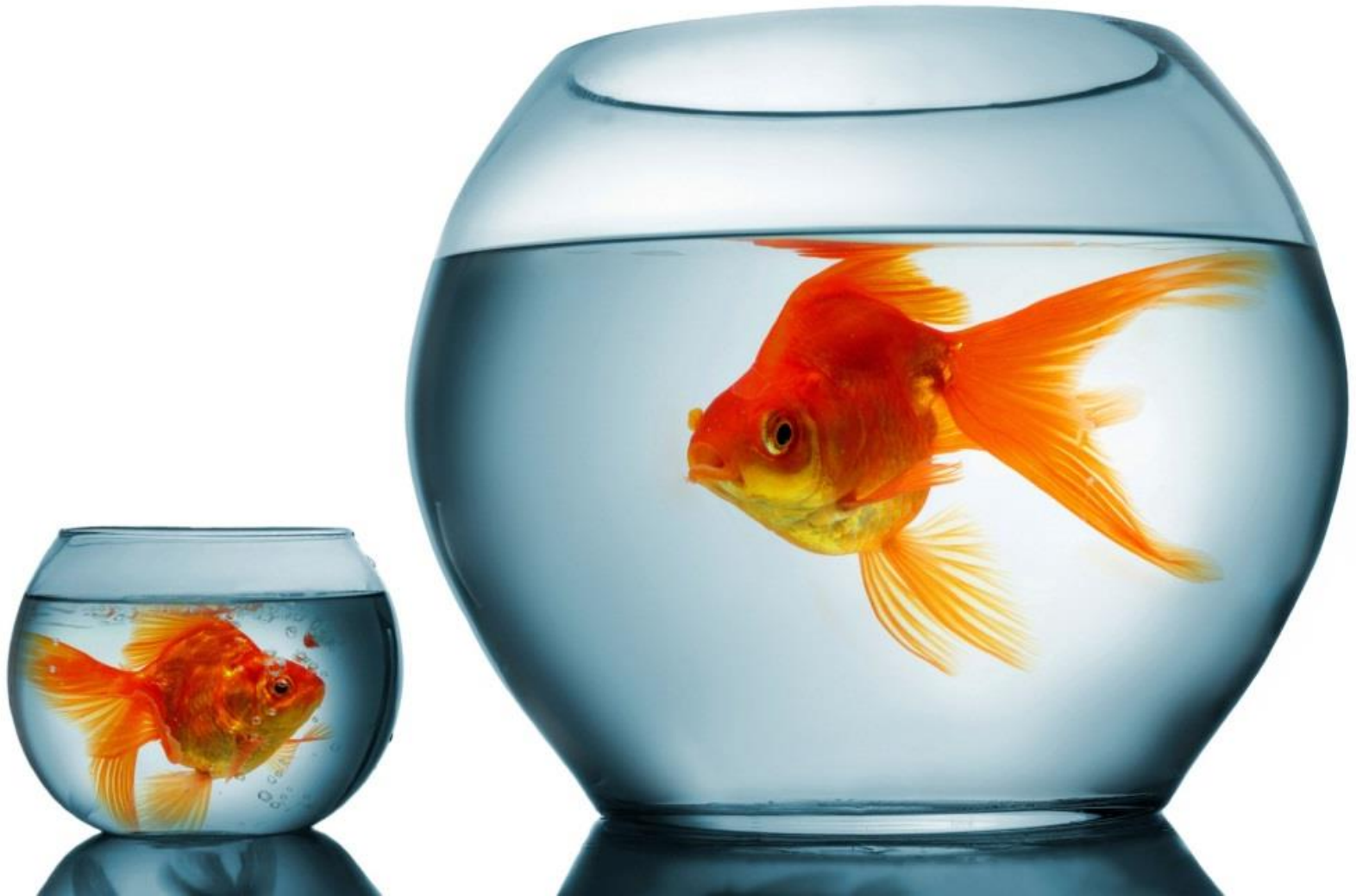
GERMANY



Denmark



The **disparity**



**Why do some communities
succeed and others fail?**







LIKE
NEW!



- Curriculum emphasizes the bond between operations and data-driven medical oversight.
- Strives to create a regional dialogue and action plan around OHCA improvement.





EMS Medical Directors and Managers

Training Officers, Telecommunicator Supervisors



Guiding Philosophy

A scenic mountain landscape with a dirt path leading through a green meadow towards snow-capped peaks. The path is in the foreground, winding through a lush green field with yellow wildflowers. In the background, there are rugged mountains with patches of snow and a large glacier or snowfield.

Free

Share materials

Projects

Mentor

Engage alumni

Programmatic Changes



- Cardiac arrest registry 31% to 85%
- QI for T-CPR 46% to 83%
- QI for HP-CPR 17% to 76%
- QI for cardiac arrests 40% to 86%
- Police AED 34% to 48%
- Public access AED program 58% to 76%
- Public CPR training 77% to 91%

Resuscitation Academy Mantras



A **mantra** is a word, or group of words that is considered capable of creating transformation

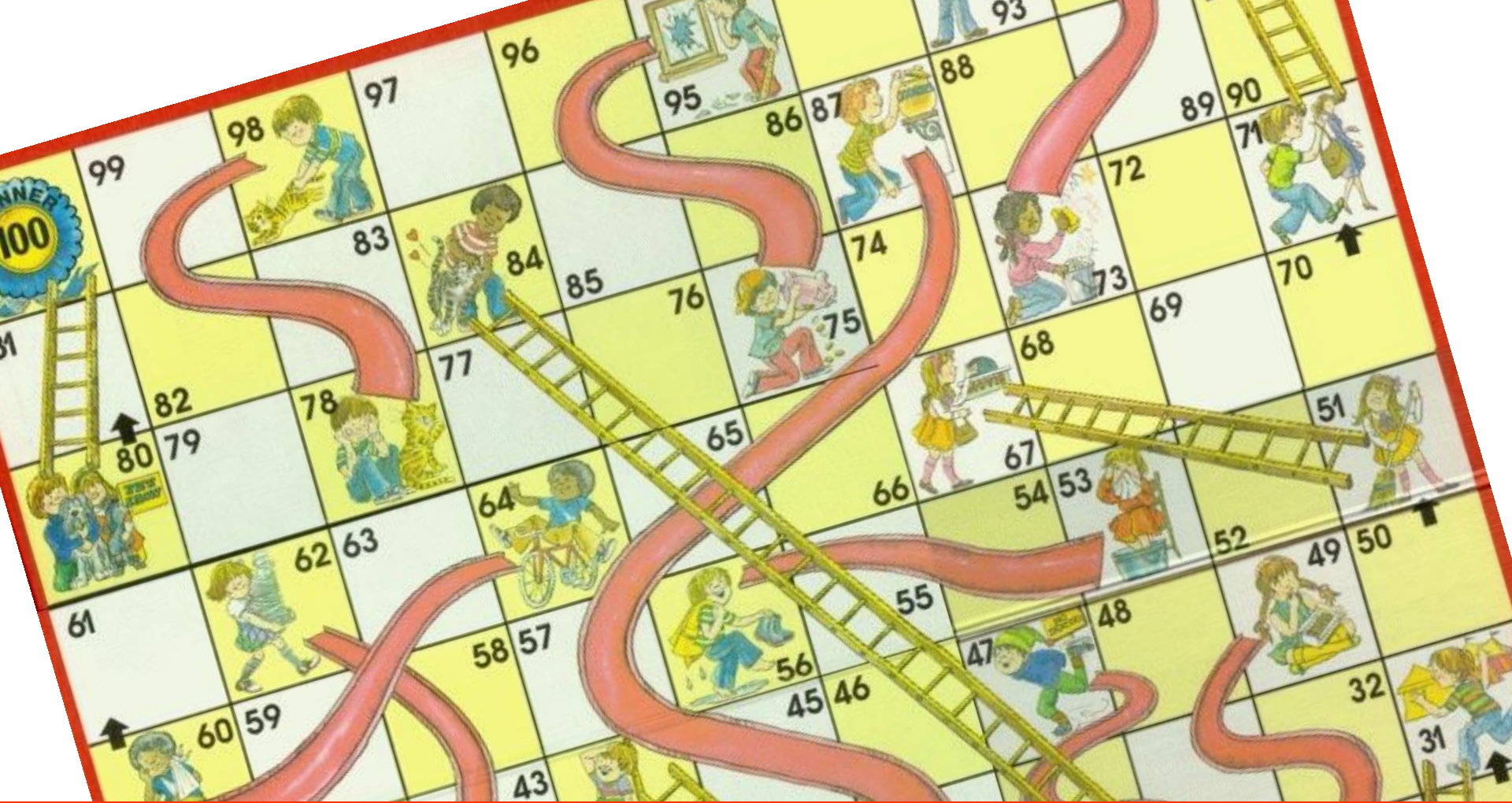


MEASURE

IMPROVE

**If you've seen one EMS system,
you've seen one EMS system**



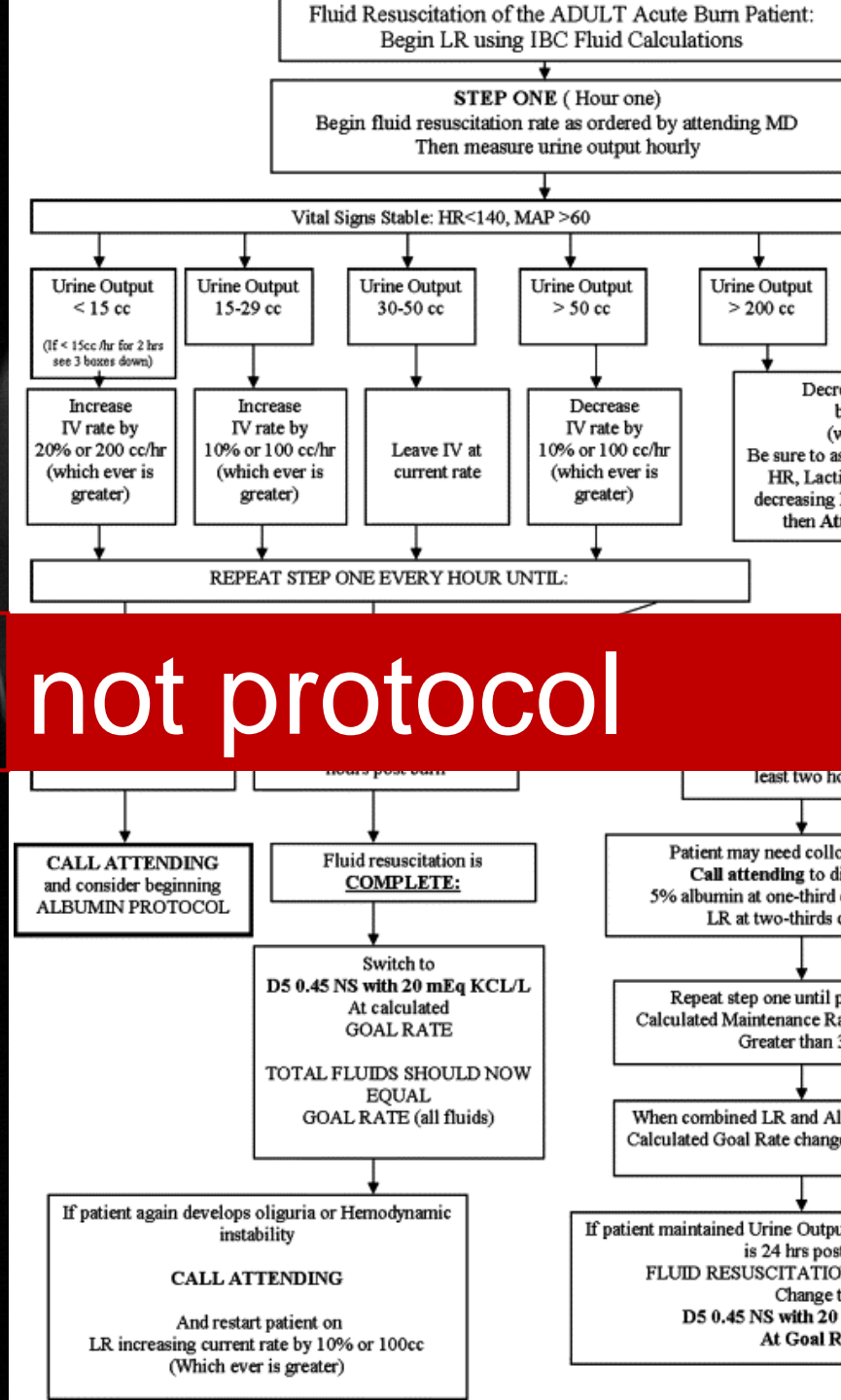



It's not complicated,
but it's not easy



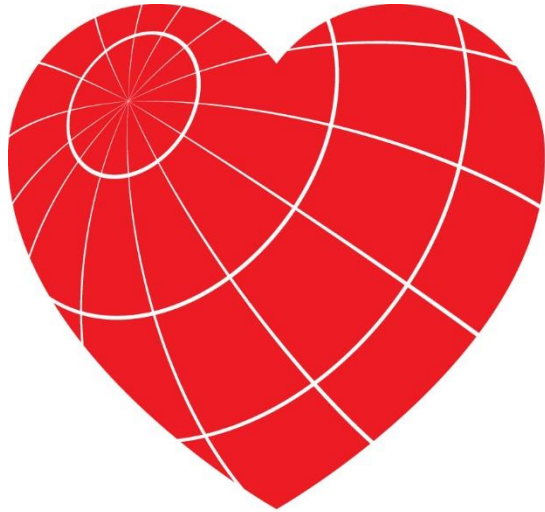


Performance not protocol



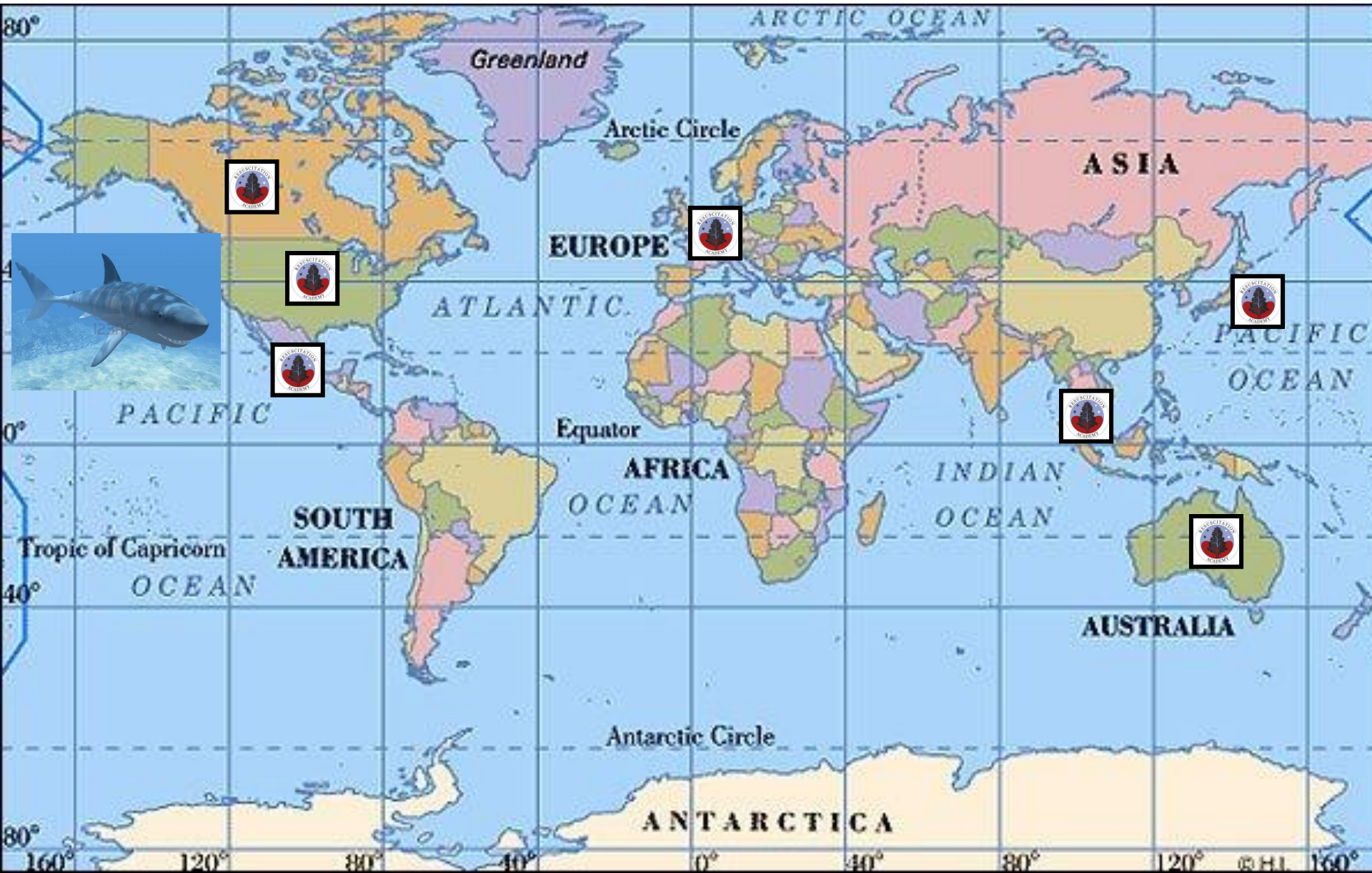


It takes a
SYSTEM
to save a victim



Global Resuscitation Alliance

28+ events in 2017



- Continue building network of leadership in Europe, Asia, Australia, and the US
- T-CPR training
- HP-CPR training for EMS
- A systems assessment tool



Currently, 1 million CA/year worldwide

Survival less than 10%

Increasing survival to 15% will achieve the goal

Five year road map to achieve goal



**50,000 additional lives saved from
cardiac arrest per year by 2020**

