

Danish Cardiac Arrest Register

October 29, 2018

The green chart

- ▶ Ambulance station and dispatch number
- ▶ Patient cpr
- ▶ Hospital
- ▶ General place of arrest
- ▶ Time of arrest - estimate!
- ▶ Observed, bystander CPR, bystander defibrillation, observed by emergency service
- ▶ Shockable rhythm and DC shock
- ▶ Immediate outcome

From other sources

- ▶ Survival
- ▶ Classification of arrest, cardiac?
- ▶ Region - using the Ambulance Station number
- ▶ Detailed location - Only Falck and with long delay
- ▶ For publications: Income, education, diagnoses, medication, nursing home discharge, return to work

What we expect!

- ▶ Precise and immediate location of arrest
- ▶ Information on use of medication
- ▶ Other interventions?
- ▶ access to ECGs

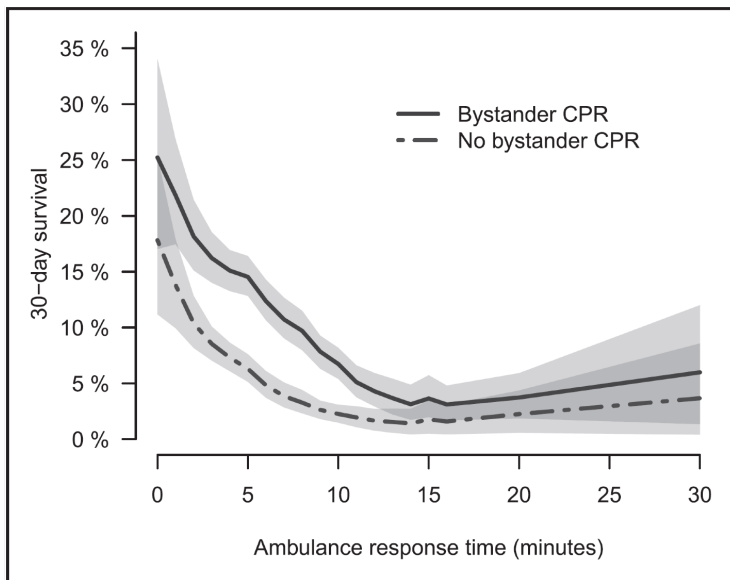
What we intend to add

- ▶ Geographical details - population density, busy public areas using geographical data from Statistics Denmark and possibly other sources

New report data

- ▶ CPR, treatment delay, survival - in selected types of region
- ▶ Regional data with and without adjustment for types of region

Add scientific data annually?



Prolonged Resuscitation

